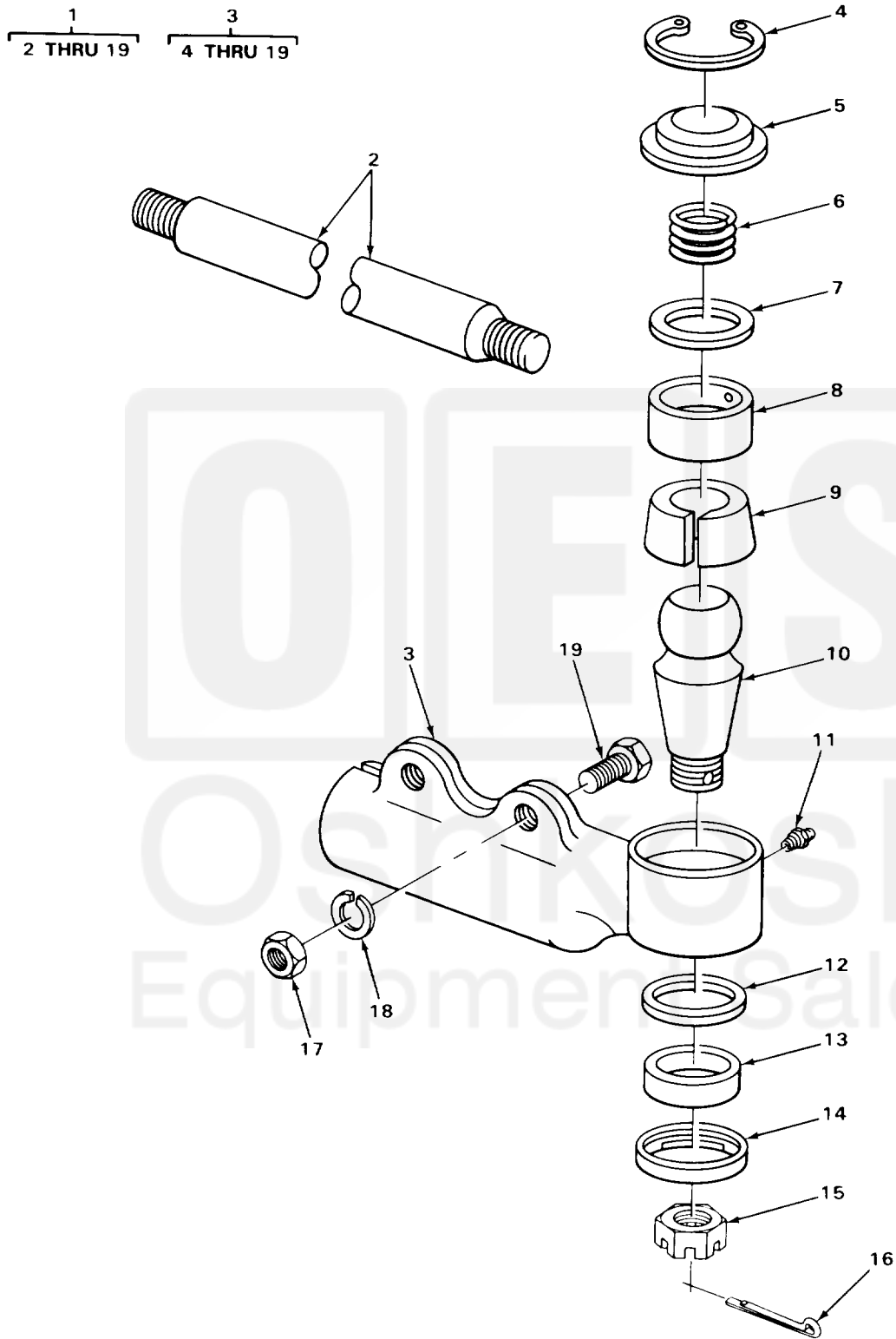


SECTION II

TM 10-3930-242-24P



TA705457

FIGURE 131. DRAG LINK (FRONT).

Current part is item (3) on diagram. Available at www.oshkoshequipment.com

ITEM NO	SMR CODE	CAGEC	PART NUMBER	DESCRIPTION AND USABLE ON CODES (UOC)	QTY
GROUP 1401 MECHANICAL STEERING GEAR ASSEMBLY					
FIG. 131 DRAG LINK (FRONT)					
1	PAFZZ	03677	LT1-522	DRAG LINK, STEERING UOC: CMP, CMQ, U73, U74	1
2	XBFZZ	72210	D18542	.TUBE	1
3	PAFZZ	72210	S7510J	.TIE ROD SOCKET ASSE RH UOC: CQK, U72	1
3	XDFZZ	72210	D18543	.TIE ROD END, STEERIN RH UOC: CMP, CMQ, U73, U74	1
3	PAFZZ	72210	S7510J	.TIE ROD SOCKET ASSE LH	1
4	XDFZZ	72210	S4250	..RING, RETAINING CAP	1
5	XDFZZ	72210	S18570	..CAP, BALL STUD	1
6	XDFZZ	72210	S18585	..SPRING, HELICAL, COMP BALL STUD RETAINING	1
7	XDFZZ	72210	S18576	..COVER, DUST SOCKET	1
8	PFZZ	72210	S18574	..BEARING HALF, SLEEVE SOCKET	1
9	XAFZZ	72210	S18573	..SEAT, BALL SOCKET	1
10	PAFZZ	72210	S18577	..STUD, BALL DRAG LINK	1
11	PFOZZ	96906	MS15003-1	..FITTING, LUBRICATION DRAG LINK	1
12	PAFZZ	97403	13212E4217	..DUST COVER	1
13	PAFZZ	72210	S18582	..BUSHING, NONMETALLIC	1
14	PFZZ	72210	S18575	..COVER, DUST	1
15	PAFZZ	72210	S18578	..NUT, PLAIN, CASTELLAT SOCKET MTG	1
16	PFZZ	96906	MS24665-357	..PIN, COTTER STUD BALL	1
17	PFZZ	96906	MS51972-7	..NUT, PLAIN, HEXAGON SOCKET MOUNTING	2
18	PFZZ	96906	MS35338-50	..WASHER, LOCK	2
19	PFZZ	96906	MS90727-166	..SCREW, CAP, HEXAGON H SOCKET MTG	2

END OF FIGURE

Current part is item (3) on diagram. Available at www.oshkoshequipment.com